

BROCHURE

THW 5021 PILING RIG

WWW.WOLTMANBV.COM



FOUNDATION RIGS AND CRAWLER CRANES

THW 5021

GENERAL INFORMATION

The THW 5021 is a hydraulic piling rig with a total weight of 50 tonnes excluding a hydraulic hammer. The machine has a self erecting leader, which reduces the set up time of the THW 5021 considerably and enables the machine to complete several small jobs on one day. The standard configuration of the THW 5021 is made for executing piling jobs with prefab piles and/or pre-drilling jobs. The pre-drilling jobs can be performed in combination with piling jobs because the rotary head is fitted on the righthand side of the leader. A complete pre-drilling system can be obtained as an option. The THW 5021 can also be used for driving and extracting cast-in-situ piles and CFA piles. In order to execute these jobs the machine has to be adjusted with a bigger engine, a stronger hammer winch and a manifold which can supply oil to both hydraulic hammers and a rotary head. When these changes have been made to the rig its name changes into the THW 5021-S. All specifications below are of the standard THW 5021.

UNDERCARRIAGE

The THW 5021 is equipped with a D6C undercarriage (H-shaped construction) with BERCO trackparts. The standard 3-rib trackplates are 900 mm wide and optional the trackplates can be covered with a smooth plate. Smooth plates however increase the total weight of the rig. The undercarriage can be hydraulically extended from 3.45 metres to 4.40 metres and the hydraulic trackdrives are O & K planetary gears.

LEADER

The leader of the THW 5021 has a standard length of 24,8 metres and the main dimensions are 650 x 600 mm. In order to reach the maximum leader length of 27,8 metres a 3 metre extension piece can be delivered as an option with the machine. The 6-sheave leader head of the THW 5021 is V-shaped and the leader foot can be dismantled. In order to reduce the transport length of the machine the leader is fitted with a hydraulic folding system. For positioning the piles the machine will be equipped with a hydraulic pile clamp. Optionally the leader can be fitted with a slideway for a pre-drilling rotary head (righthand side).

DIESELENGINE AND HYDRAULIC SYSTEM

The standard dieselengine in the THW 5021 is a Caterpillar 3126B ATAAC of 228 Hp at 1800 Rpm. This engine is fitted with an original Caterpillar radiator with a cooling capacity up to 50° Celsius meets and also meets the latest environmental regulations (Stage 2/TIER 2). The hydraulic system is powered by Rexroth pumps and Rexroth valve blocks. When required the hydraulic system can be filled with biodegradable oil (optional).

WINCHES

The THW 5021 is equipped with the following hydraulic winches :

| WINCH TYPE | LINE-PULL | SPEED | PARTS | DRUM | ROPE DIA. |
|----------------------|-------------|---------------|-------|---------|-----------|
| Hammer winch | 6,0 tonnes | 0-40 mtr/min. | 2 | Woltman | 19 mm |
| Hammer winch(option) | 12,5 tonnes | 0-60 mtr/min. | 2 | Woltman | 22 mm |
| Pile winch | 6,0 tonnes | 0-40 mtr/min. | 2 | Woltman | 19 mm |
| Service winch | 4,0 tonnes | 0-40 mtr/min. | 1 | Woltman | 16 mm |



FOUNDATION RIGS AND CRAWLER CRANES

The optional hammer winch is standard on the THW 5021-S. On the THW 5021-S it can be used in a 4-part line system, which gives a 50 tonne extraction force for cast-in-situ jobs and drilling jobs.

CABINS AND OTHER SPECIFICATIONS

The operator's cabin of the THW 5021 has enough room and will be arranged ergonomically. The operator's seat is of a good quality and has built-in joysticks for controlling the rig. Standard control of the rig is by means of hydraulic joysticks (electric control is optional). All instruments in the operator's cabin are easy to oversee and the standard equipment consists of :

- An Inclinator
- A MFA-system for monitoring temperatures, pressures and tank contents
- A Blaupunkt Radio/CD player
- An adjustable heating system (Airconditioning is optional)

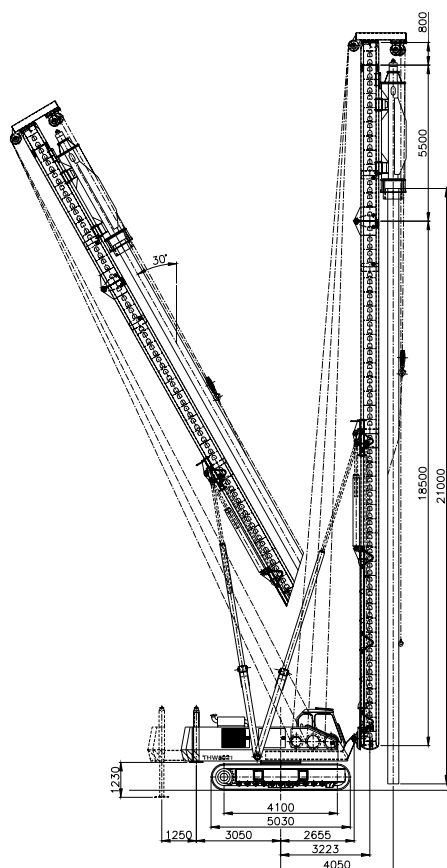
The engine compartments are easily accessible and also easy to dismount. In order to reduce the engine noise, all cabin parts will be fitted with sound isolating foam. All cabins will also be fitted with inner illumination and on the outside of the rig several working lights will be mounted. The complete rig will be painted in your company colours.

The THW 5021 has a sliding brace with a stroke of 1500 mm for spotting on the pile position. The counterweight can be hydraulically extended 1.250 mm and in the counterweight two outriggers have been mounted. With the help of these outriggers and the leader the machine can be lifted off the ground and the undercarriage can be freely rotated. This makes the loading of the THW 5021 on a low loader a lot easier.



FOUNDATION RIGS AND CRAWLER CRANES

TECHNICAL SPECIFICATIONS THW 5021 PILING RIG

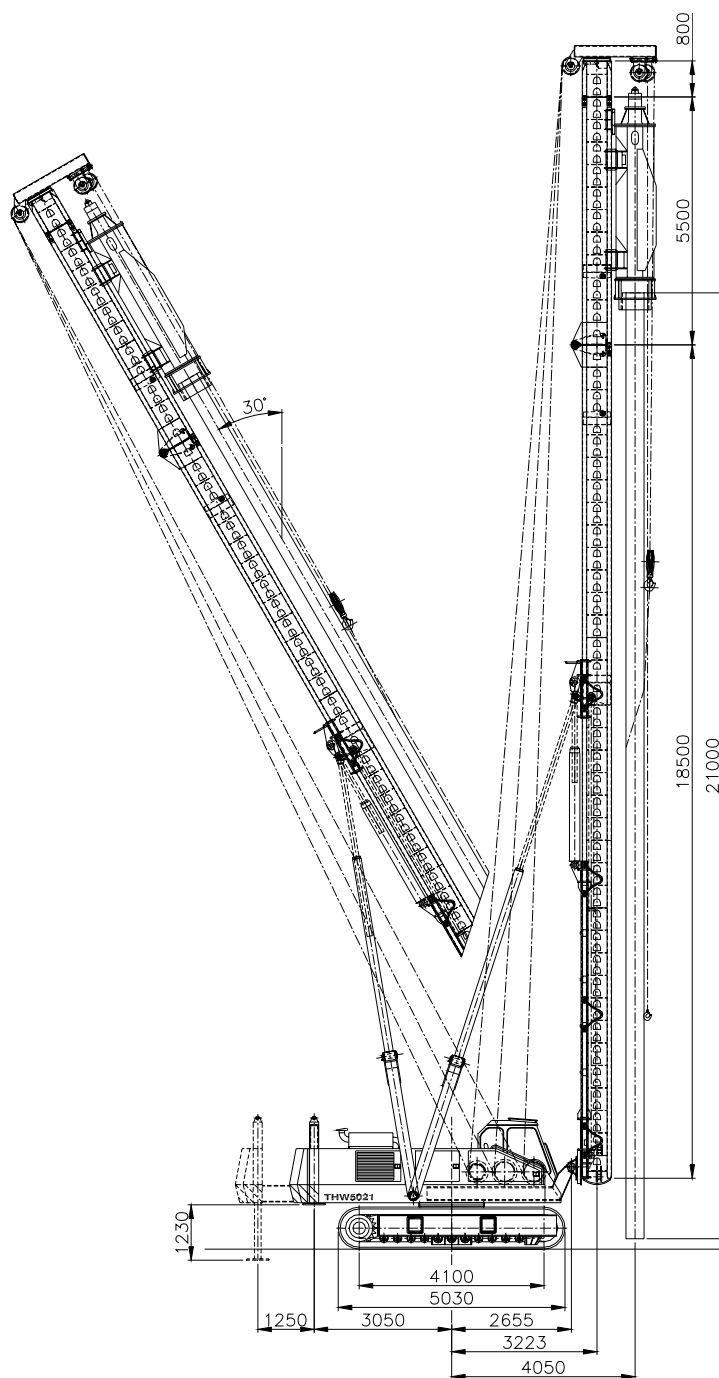


| | |
|-----------------------------------|----------------------|
| Maximum capacity (pile + hammer) | : 18,0 tonnes |
| Standard leader length | : 24,80 metres |
| Maximum leader length | : 27,80 metres |
| Main dimensions of leader | : 650 x 600 mm |
| Stroke of leader | : 4.500 mm |
| Stroke of spotting device | : 1.500 mm |
| Capacity of hammer winch | : 6,0 tonnes |
| Speed of hammer winch | : 0-40 mtr/min. |
| Capacity of pile winch | : 6,0 tonnes |
| Speed of pile winch | : 0-40 mtr/min. |
| Capacity of service winch | : 4,0 tonnes |
| Speed of service winch | : 0-40 mtr/min. |
| Diesel engine | : CATERPILLAR |
| Engine power | : 228 hp at 1800 rpm |
| Hydraulic pumps | : Rexroth plunger |
| Valve blocks | : Rexroth |
| Electric system | : 24 Vdc |
| Trackparts | : BERCO |
| Type of undercarriage | : D6 CSS |
| Transport length | : 19.300 mm |
| Transport height (without hammer) | : 3.585 mm |
| Transport width | : 3.450 mm |
| Operating width | : 4.400 mm |
| Length of undercarriage | : 5.030 mm |
| Standard trackplate width | : 900 mm |
| Stroke of counterweight | : 1.250 mm |
| Dismountable counterweight | : 6,9 tonnes |
| Fixed counterweight | : 1,1 tonnes |
| Machineweight without hammer | : 50 tonnes |



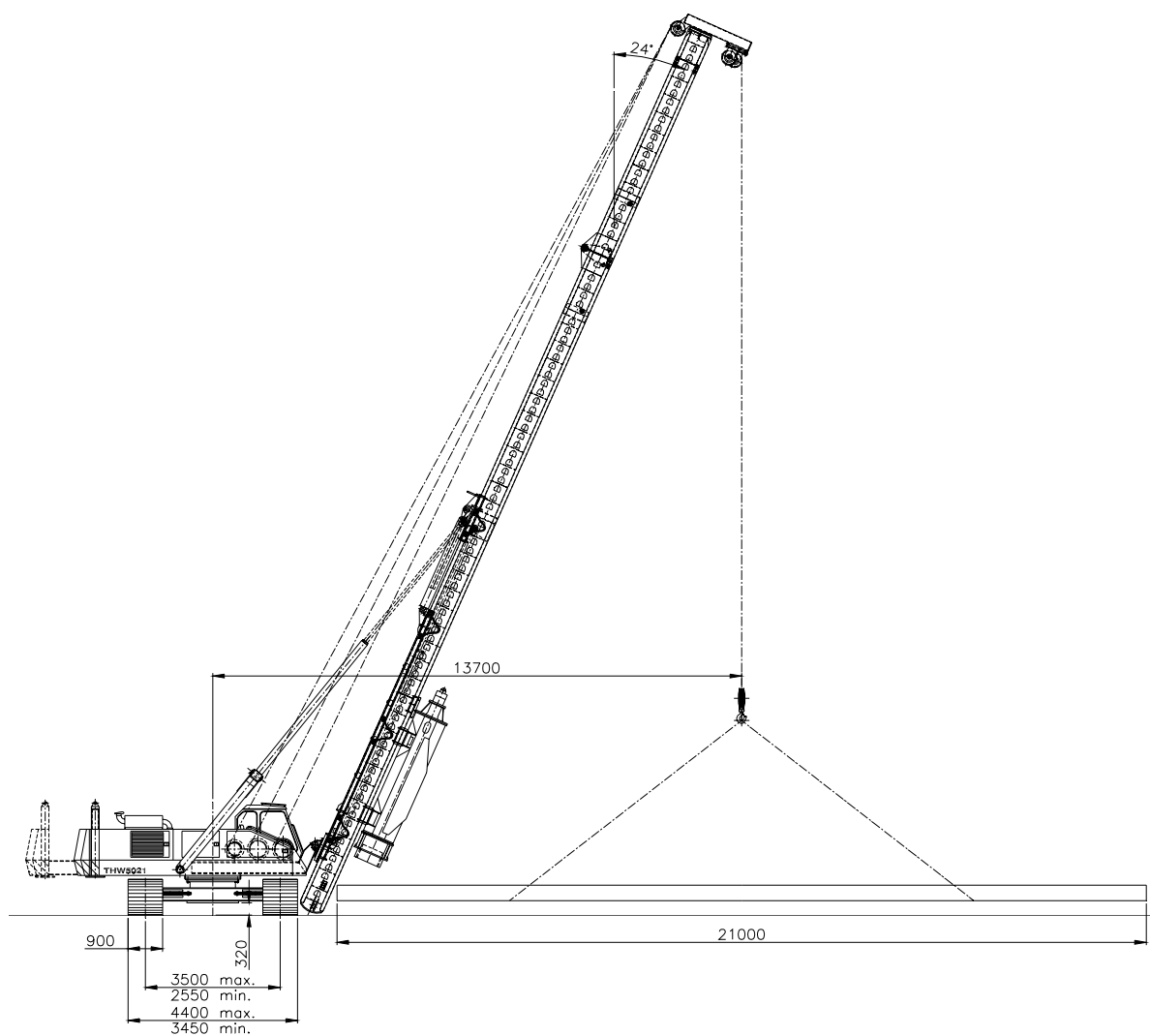
FOUNDATION RIGS AND CRAWLER CRANES

THW 5021





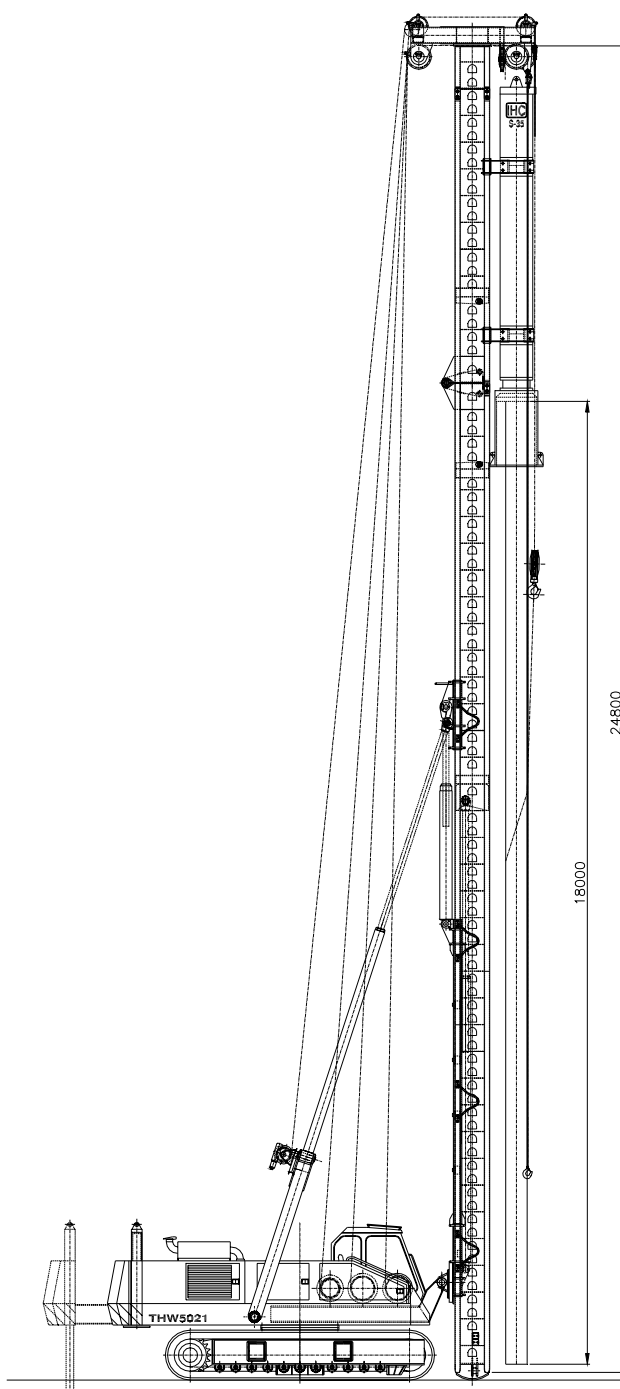
THW 5021





FOUNDATION RIGS AND CRAWLER CRANES

THW 5021-S





FOUNDATION RIGS AND CRAWLER CRANES

THW 5021

